

# Launch Menu

## Getting Started Guide

### Introduction

Launch Menu provides users with an alternative way of accessing applications to the conventional Windows Desktop or Start menu.



Launch Menu is ideal for use in a primary school environment. Its large buttons only require single-clicking while conventional Windows desktop icons are quite small and require double-clicking: something which young children can find quite difficult to do.

### Installation

To install Launch Menu, run 'Setup.exe' from the **Launch Menu** folder on the CD and follow the on-screen instructions.

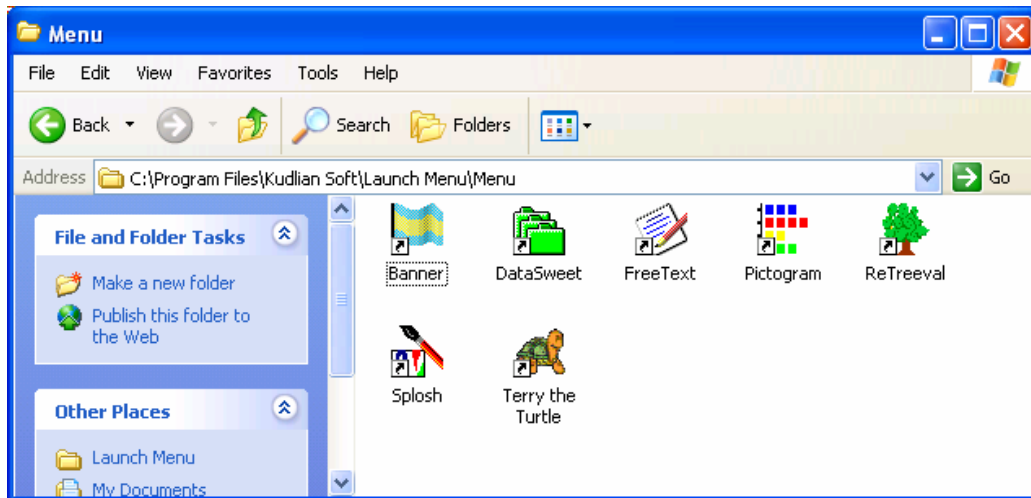
### Getting Started

To run Launch Menu, click its shortcut in the Start menu.

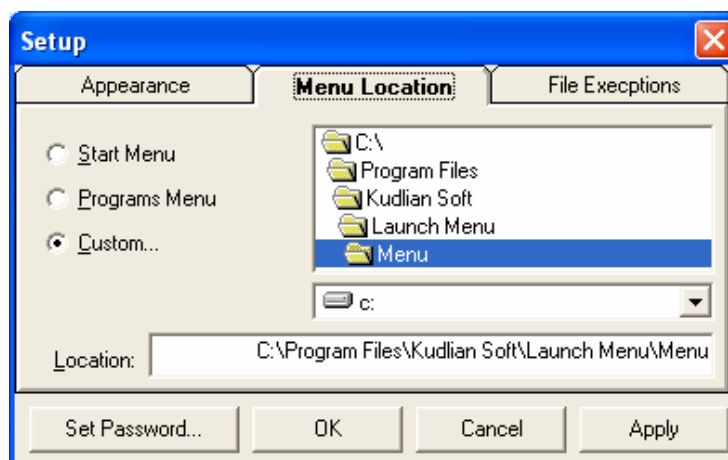
In its default state, the Launch Menu replicates the 'Programs' section of the Start menu.

## Displaying a Different Menu

Launch Menu can display a menu of your choice. A 'menu' is simply a Windows folder. The buttons that make up the menu are Windows shortcuts within that folder. Sub-menus are other Windows folders within the folder.



To make Launch Menu display a different menu, press **Ctrl-E**. A **Setup** window will appear. On the **Menu Location** tab, select **Custom...** and browse to the folder containing your menu items. Click **OK**.



## Creating Your Own Menu

To create your own menu, create a new folder, naming it appropriately e.g. 'Main Menu'. Then create new shortcuts and folders in the folder or copy existing ones into it.

## **Changing the Appearance of the Menu**

If you are not happy with the order in which the menu items appear, you can change it. While in setup mode, drag the buttons up and down the menu. (A 'menu.dat' file is created/updated. This tells Launch Menu which order the menu items should appear in).

By default, sub-menus in Launch Menu have the yellow Windows folder icon associated with them. You can associate your own icons with these sub-menus by copying a '.ico' file into that folder.

## **More Advanced Features**

Launch Menu keeps its own File Exceptions list. The folder containing your menu items may contain files which you do not wish to appear in your menu. By adding certain file types to the File Exceptions list, you can stop them appearing in your menu. By default, .dat and .ico file extensions are already in the file exceptions list.

If you would like to browse through the menu while still in setup mode, hold down the Ctrl key while clicking the menu buttons.

Any changes that are made to the menu can be updated by pressing the F5 key.

You may wish to have Launch Menu appear automatically as the Windows desktop appears. If you are using Desktop Administrator, tick the 'Run the following Application on Startup' box and enter a path to the 'LaunchMnu.exe' file in the box.

However you do decide to run Launch Menu, you can append the path to the folder containing your menu items to the Target box in the properties of the shortcut which runs Launch Menu. This 'forces' Launch Menu to run your menu items and overrides any settings which may have been applied to individual machines/profiles.

## **Using Launch Menu in a Network Environment**

If you store the folder containing your menu items on a server, you only need to make changes to the menu once for all client machines to be updated.

Also, NTFS permissions can be used to 'show' and 'hide' items from the menu depending on which group the user is a member of. For example, if you want staff to have access to a button called User Guides but not pupils, remove Pupils from the Security Permissions of the User Guides folder but give Staff read access. When you log on as a member of the Pupils group, the button will not appear. When you log on as a member of the Staff group, it will.

## Troubleshooting

It has been noted that, on some systems, the Launch Menu runs for the user that installed the software but not for other users.

If you experience this behaviour, you need to carry out the following steps. (Please note that the following makes use of Registry Editor – if you are not familiar with Registry Editor, please contact your network administrator):

- Log on as the user that installed the software
- Run **Registry Editor**
- Browse to **HKEY\_CURRENT\_USER\Software** and highlight the **Launch Systems** key
- Click the **File** menu
- Click **Export...**
- Name the registry file **Launchmnu** and browse to a suitable folder (the example below assumes it has been saved to the '**netlogon**' folder on a server called '**server**')
- Click **Save**
- Close **Registry Editor**
- Add the following line to the users' logon script:

```
regedit /s \\SERVER\NETLOGON\Launchmnu.reg
```

Now, as a user logs on, their registry settings will be updated to allow the menu to run properly.